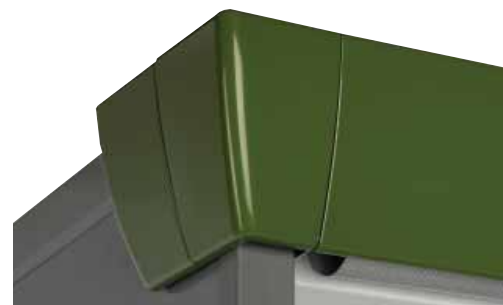


# SPIRIT MD30

A PART OF DYNAMIC VISION COLLECTION



THE SIGN OF COOL QUALITY

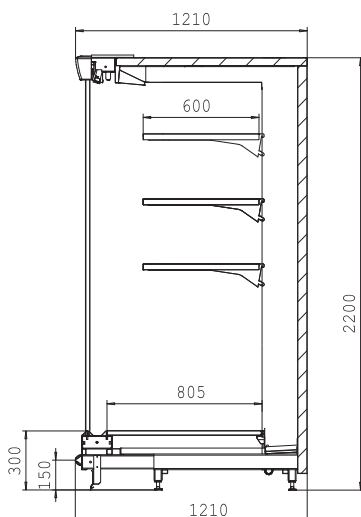
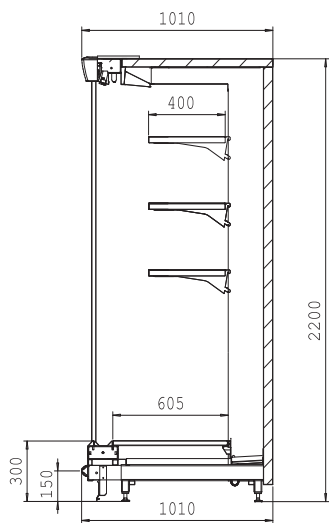
- Superior product visibility
- Large display area for demanding products
- Stylish and dynamic form of canopy
- Wider air channels for improved air circulation
- Optimized suction grid
- Easy to install and maintain

## VISION COLLECTION

How to read the code:

**MD30-121-220-250**  
 Front height    Depth    Height    Length

Measures are centimeters.



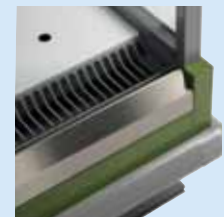
## STANDARD FEATURES

- Fan evaporator and expansion valves standard for R404A and CO<sub>2</sub> refrigerant
- Fans
- Defrosting ROD
- Defrost water connections for each unit, external diameter 40 mm
- Thermometer
- Overhead light fitting
- Electricity switch box on the top of the cabinet
- Full-length drainage kit

## TECHNICAL DATA

Front height    300 mm  
 Height         2200 mm  
 Air Temperature    0...+2 °C

	<sup>1)</sup> E.C (W) 24 HRS	MIN. POWER INPUT W	MAX. POWER INPUT W	LENGTH	DEPTH	<sup>2)</sup> REFR. AREA M <sup>2</sup>
MD30-82-220-188	3595	758	1058	1875	817	3,57
MD30-82-220-250	4685	970	1330	2500	817	4,76
MD30-82-220-375	7015	1430	1970	3750	817	7,14
MD30-101-220-188	3565	758	1058	1875	1007	4,88
MD30-101-220-192-E	3640	775	1135	1920	1007	5,00
MD30-101-220-212-E	4020	845	1205	2120	1007	5,52
MD30-101-220-232-E	4400	970	1330	2320	1007	6,04
MD30-101-220-250	4740	970	1330	2500	1007	6,51
MD30-101-220-375	7105	1430	1970	3750	1007	9,77
MD30-111-220-125	2400	370	550	1250	1107	4,01
MD30-111-220-188	3610	758	1058	1875	1107	6,01
MD30-111-220-192-E	3685	775	775	1920	1107	6,15
MD30-111-220-212-E	4070	845	845	2120	1107	6,79
MD30-111-220-232-E	4455	970	970	2320	1107	7,44
MD30-111-220-250	4800	970	1330	2500	1107	8,01
MD30-111-220-375	7190	1430	1970	3750	1107	12,02
MD30-121-220-125	2425	370	550	1250	1207	4,76
MD30-121-220-188	3650	758	1058	1875	1207	7,13
MD30-121-220-192-E	3725	775	775	1920	1207	7,30
MD30-121-220-212-E	4115	845	845	2120	1207	8,07
MD30-121-220-232-E	4505	970	970	2320	1207	8,83
MD30-121-220-250	4855	970	1330	2500	1207	9,51
MD30-121-220-375	7275	1430	1970	3750	1207	14,27



Removable suction grids for effortless cleaning.



Standard shelf lighting.



Coverplate Arc.

<sup>1)</sup> Extraction Capacity (W) 24 hrs operation time <sup>2)</sup> with optimal nr of shelves and depth

## OPTIONAL EQUIPMENT

- Expansion valves for other refrigerants
- Energy saving fans
- Mirrored end unit
- Partition unit
- Bumper trim for end unit
- Shelf with console 300, 400 and 500 mm
- Shelf lights
- Holders, dividers etc.
- Night curtains motorised or manual
- Automatic control system
- Extension kit

## ACCESSORIES

- Ticket strip holder
- New curved form of shelf consoles
- Corner cover
- Pizza shelves
- "Mix a Meal" -concept with 6250 mm module, podiums 6250 mm and 1250 mm and shelves with plastic bowls

